

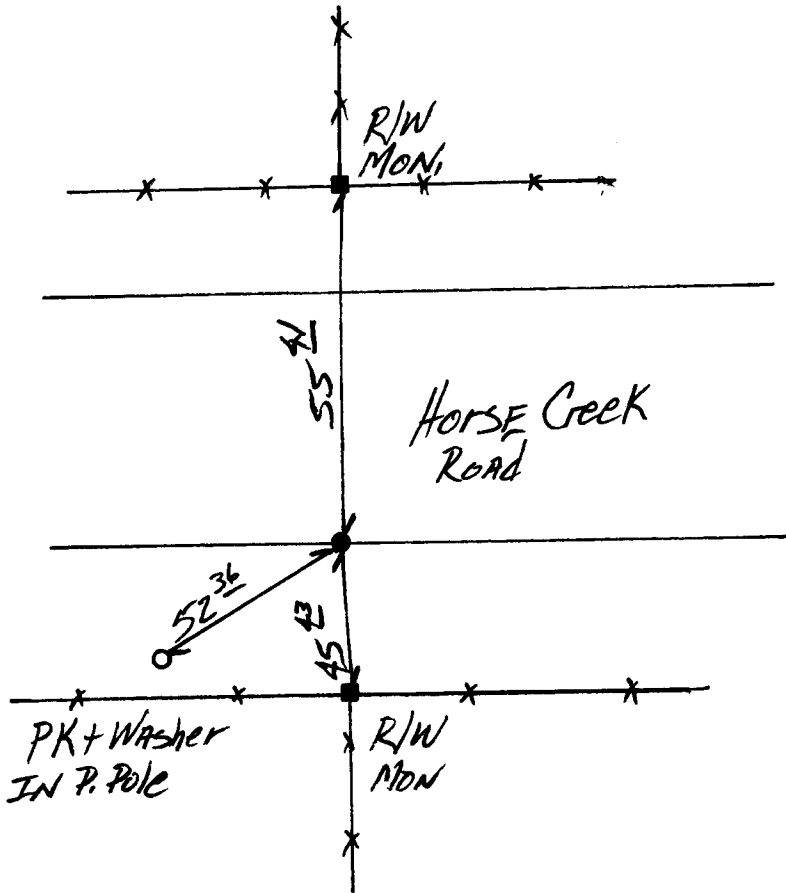
# State of Wyoming Corner Record

(in compliance with the CORNER PERPETUATION AND FILING ACT, Wyoming Statutes, 1977, Section 36-11-101, et. seq., and the Rules and Regulations of the Board of Registration for Professional Engineers and Professional Land Surveyors)

Reverse side of this form may be used if more space is needed.

Record of original survey and citation of source of historical information (if corner is lost or obliterated). Description of corner monumentation evidence found and/or monument and accessories established to perpetuate the location of this corner. Sketch of relative location of monument, accessories, and reference points with course and distance to adjacent corner(s) (if determined in this survey). Method and rationale for reestablishment of lost or obliterated corner.

*Found and replaced spike, per Forms by LS 519 and LS 495  
Set 3/4" Al. Cap on 3/4" Rebar*



RECEIVED  
 LARAMIE COUNTY CLERK  
 CHEYENNE, WY  
 1994 NOV 21 AM 9:03

154077

SSS  
 R67W  
 S33 | S34 T15N  
 S4 | S3 T14N  
  
 1994  
 PLS 5910

Date of Field Work: 7/94 Office Reference: 94122

**CROSS INDEX DIAGRAM**

Firm/Agency, Address

**STEIL SURVEYING SERVICES**  
1102 WEST 19th STREET  
CHEYENNE WY 82001  
 Telephone Number: (307) 634-7273

This corner record was prepared by me or under my direction and supervision.

SEAL & SIGNATURE

A	1	2	3	4	5	6	7	8	9	10	11	12	13	14	15	16	17	18	19	20	21	22	23	24	25	26
B																										
C	6				5					4					3					2						
D																										
E																										
F																										
G	7				8					9					10					11						
H																										
I																										
J																										
K																										
L	18				17					16					15					14						
M																										
N																										
O																										
P	19				20					21					22					23						
Q																										
R																										
S																										
T	30				29					28					27					26						
U																										
V																										
W																										
X	31				32					33					34					35						
Y																										
Z																										



**BOOK 1388**

Corner Name: Section Section: 33/34 T 15 R 67; 6<sup>th</sup> P.M. Cross-Index No.: 2-13

SBRPEPLS/PLSW: March 1994

**0351**